

PART OF THE S.W. 1/4 OF SECTION 33, T.7N., R.1E., S.L.B. & M.

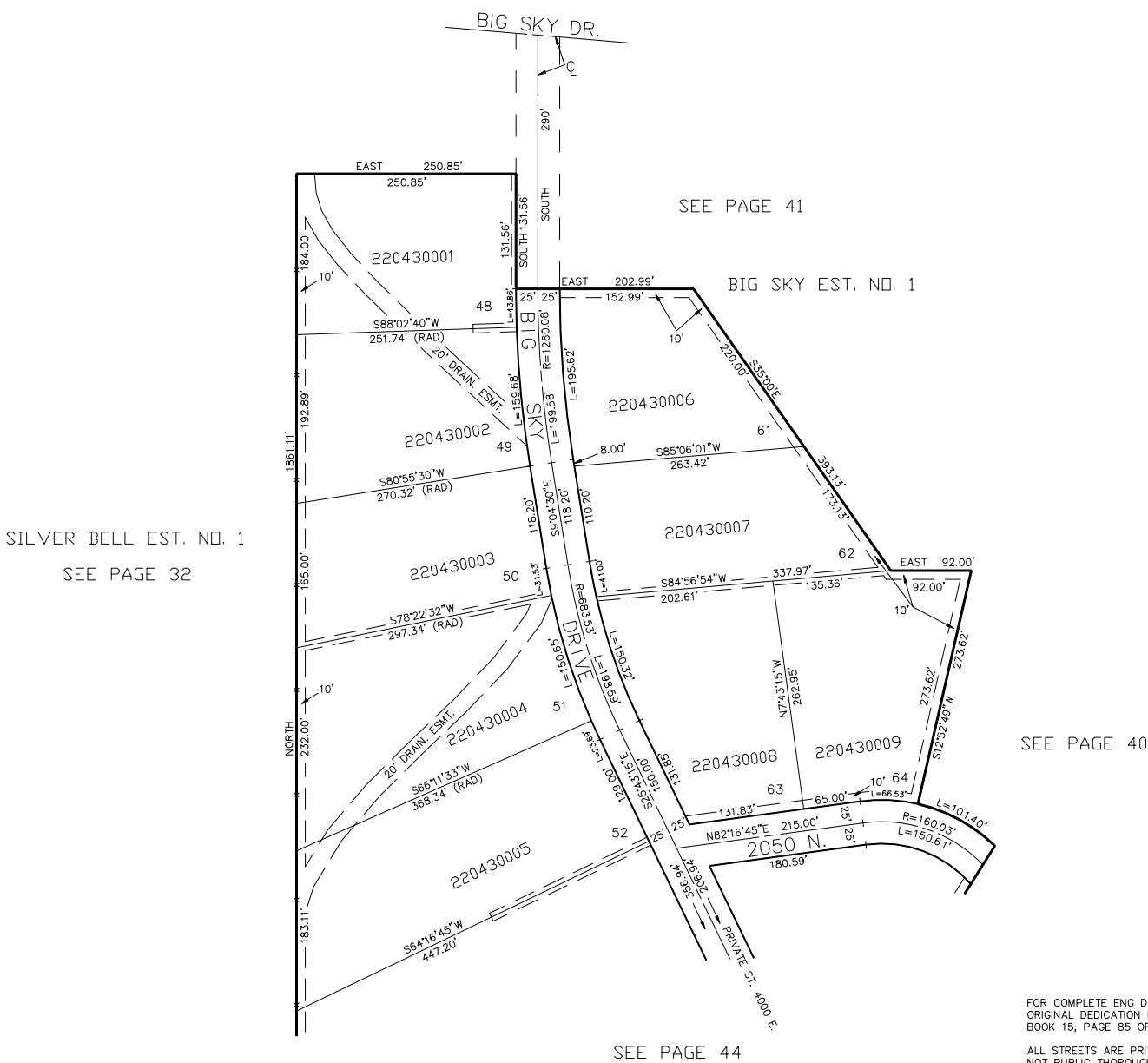
BIG SKY ESTATES NO. 2

LOTS 48-52 & 61-64

TAXING UNIT: 317

IN WEBER COUNTY

SCALE 1" = 100'



5' UTILITY & DRAINAGE EASEMENTS EACH
SIDE OF PROPERTY LINES AS INDICATED
BY DASHED LINES EXCEPT AS OTHERWISE
SHOWN.